



L.E.D. FLOODLIGHT



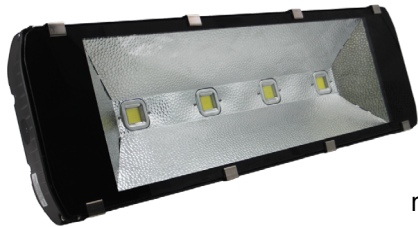
TBFLOOD-LED-140W-120VAC

This 140 Watt wide beam LED flood light provides a very bright light source for industrial and marine applications replacing costly high-maintenance incandescent, high-pressure sodium & metal halide sources.

Because LED does not contain toxic mercury, your lighting is much safer. These LED lamps have an average lifetime of 50,000 hours, giving you many years of maintenance-free usage.

SPECIFICATIONS:

Body Material: Aluminum die casting
Dimensions: 23" w x 11" h x 4" d
LED Color: White
Weight: 25 lbs
Average Life: 50,000 Hours
Wattage: 140 Watts
Lumens: 8,500 lm
Viewing Angle: 130 Degrees
Voltage: 85 to 260 VAC
IP Degree: IP66 = Dust and water jet protection
Ambient Temperature Range: -40° + 60°C



TBFLOOD-LED-200W-120VAC

This 200 Watt wide beam LED flood light provides a very bright light source for industrial and marine applications replacing costly high-maintenance incandescent, high-pressure sodium & metal halide sources.

Because LED does not contain toxic mercury, your lighting is much safer. These LED lamps have an average lifetime of 50,000 hours, giving you many years of maintenance-free usage.

SPECIFICATIONS:

Body Material: Aluminum die casting
Dimensions: 35 1/2" w x 11 1/4" h x 4" d
LED Color: White
Weight: 45 lbs
Average Life: 50,000 Hours
Wattage: 200 Watts
Lumens: 12,000 lm
Viewing Angle: 130 Degrees
Voltage: 85 to 260 VAC
IP Degree: IP66 = Dust and water jet protection
Ambient Temperature Range: -40° + 60°C



TBSPOT-LED-200W-120VAC

This 200 Watt narrow beam LED flood light provides a very bright light source for industrial and marine applications replacing costly high-maintenance incandescent, high-pressure sodium & metal halide sources.

Because LED does not contain toxic mercury, your lighting is much safer. These LED lamps have an average lifetime of 50,000 hours, giving you many years of maintenance-free usage.

SPECIFICATIONS:

Body Material: Aluminum die casting
Dimensions: 35 1/2" w x 11 1/4" h x 4" d
LED Color: White
Weight: 45 lbs
Average Life: 50,000 Hours
Wattage: 200 Watts
Lumens: 12,000 lm
Viewing Angle: 60 Degrees
Voltage: 85 to 260 VAC
IP Degree: IP66 = Dust and water jet protection
Ambient Temperature Range: -40° + 60°C

